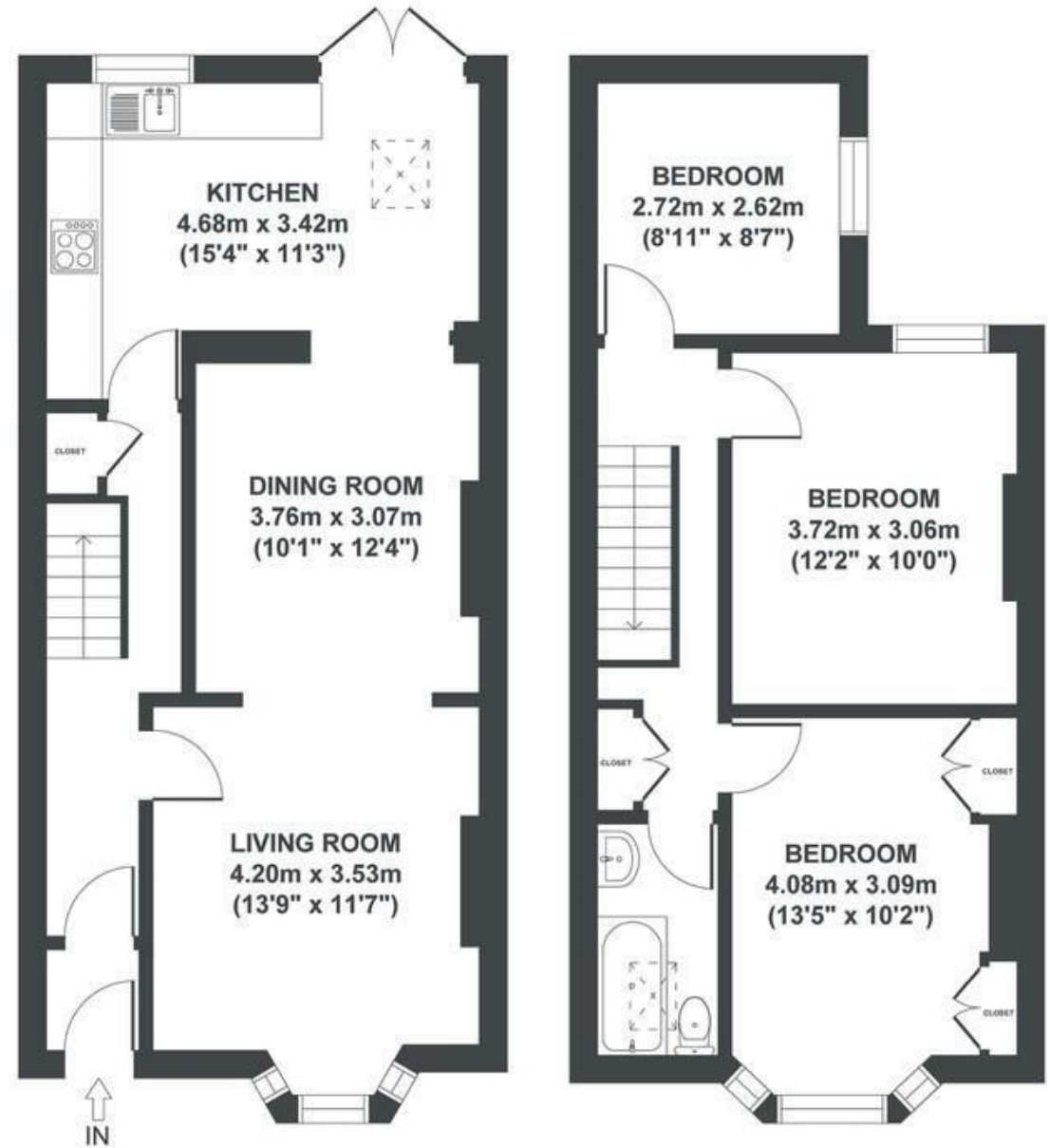


Shaftesbury Avenue

MONTPELIER

APPROXIMATE FLOOR AREA
87 SQM / 936 SQFT



Illustrations are for reference purposes only, measurements are approximate, not to scale.

Boardwalk

Shaftesbury

MONTPELIER, BRISTOL



£535,000



3 Bedrooms



Bristol, BS6



1 Bathrooms

5111

"Everything you need is on your doorstep - Picton Street is just around the corner, with Bianchi's restaurant, the Bristolian café and a great organic veg shop. Most importantly, Shaftesbury Avenue feels like a community. It's the sort of street where everyone knows each other's name and you know you can knock on someone's door if you need to borrow a tool.

Our house has always felt like a haven away from the bustle of the city. In the winter, we light the wood burner to stay cosy. And in the summer, the south-facing garden turns into the Mediterranean and we spend most of our time out there."

